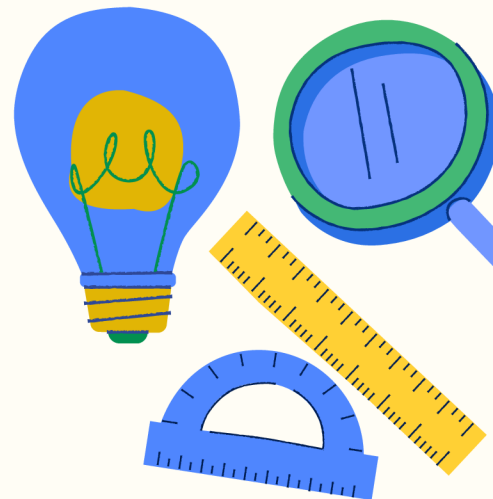




**ACKLAM WHIN  
PRIMARY SCHOOL**

# Special Educational Needs & Disabilities (SEND) Newsletter

**APRIL 2025**



## SPOTLIGHT ON...

### WHAT IS SEND?

All children may experience challenges with their learning at some point and for most children, these difficulties are overcome with support. Children with SEND are likely to need additional support or adaptations to help them to learn.

### CONTACT INFO

**Email:** [awcontact@acklamwhin.co.uk](mailto:awcontact@acklamwhin.co.uk)  
FAO Miss Tarran

**Phone:** 01642 813938

### HOW DO I KNOW?

#### A child has SEND if:

- They have a significantly greater difficulty in learning than the majority of others of the same age.
- They have a disability which prevents or hinders them from making use of facilities provided for others of the same age in mainstream schools.

#### A child has a disability if:

- They have a physical or mental impairment which has a substantial and long-term adverse effect on their ability to carry out day-to-day activities.

### KEY MEMBERS OF STAFF

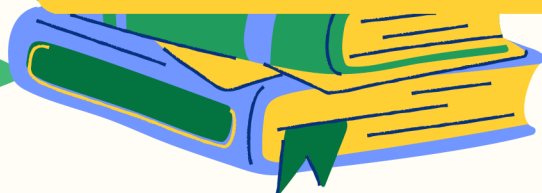
Miss Tarran - SENDCo

Mrs Tribe - SEND & pastoral support

Mrs Ward - S&L support

Mrs Trodden - S&L support

Mrs Butchart - SEND Governor

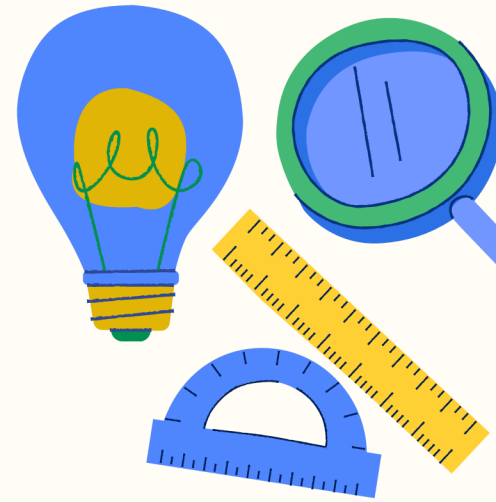




**ACKLAM WHIN  
PRIMARY SCHOOL**

# **Special Educational Needs & Disabilities (SEND) Newsletter**

**APRIL 2025**



## **SPOTLIGHT ON...**

### **WHAT ARE THE TYPES OF SEND?**

#### **Communication & Interaction**

Children with speech, language and communication needs (SLCN) have difficulty in communicating with others. The profile for every child with SLCN is different and their needs may change over time. They may have difficulty with one, some or all of the different aspects of speech, language or social communication at different times of their lives. Children with autism (ASD) are likely to have particular difficulties with social interaction. They may also experience difficulties with language, communication and imagination, which can impact on how they relate to others.

#### **Cognition & Learning**

Support may be required when children learn at a slower pace than their peers, even with appropriate differentiation. Learning difficulties cover a wide range of needs, including moderate learning difficulties (MLD), severe learning difficulties (SLD) through to profound and multiple learning difficulties (PMLD). Specific learning difficulties (SpLD), affect one or more specific aspects of learning. This encompasses a range of conditions such as dyslexia, dyscalculia and dyspraxia.

#### **Social, Emotional and Mental Health**

Children may experience a wide range of social and emotional difficulties which manifest themselves in many ways. These may include becoming withdrawn or isolated, as well as displaying challenging, disruptive or disturbing behaviour. These behaviours may reflect underlying mental health difficulties such as anxiety or depression, self-harming, substance misuse, eating disorders or physical symptoms that are medically unexplained. Other children may have disorders such as attention deficit disorder, attention deficit hyperactive disorder or attachment disorder.

#### **Sensory and/or Physical**

Some children require special educational provision because they have a disability which prevents or hinders them from making use of the educational facilities generally provided. These difficulties can be age related and may fluctuate over time. Many children with vision impairment (VI), hearing impairment (HI) or a multi-sensory impairment (MSI) will require specialist support and/or equipment to access their learning, or habilitation support. Some children with a physical disability (PD) require additional ongoing support and equipment to access all the opportunities available to their peers.

### **UPCOMING EVENTS**

- SEND Autism info event @ Acklam Whin - 1.5.25 @ 2.30pm

